

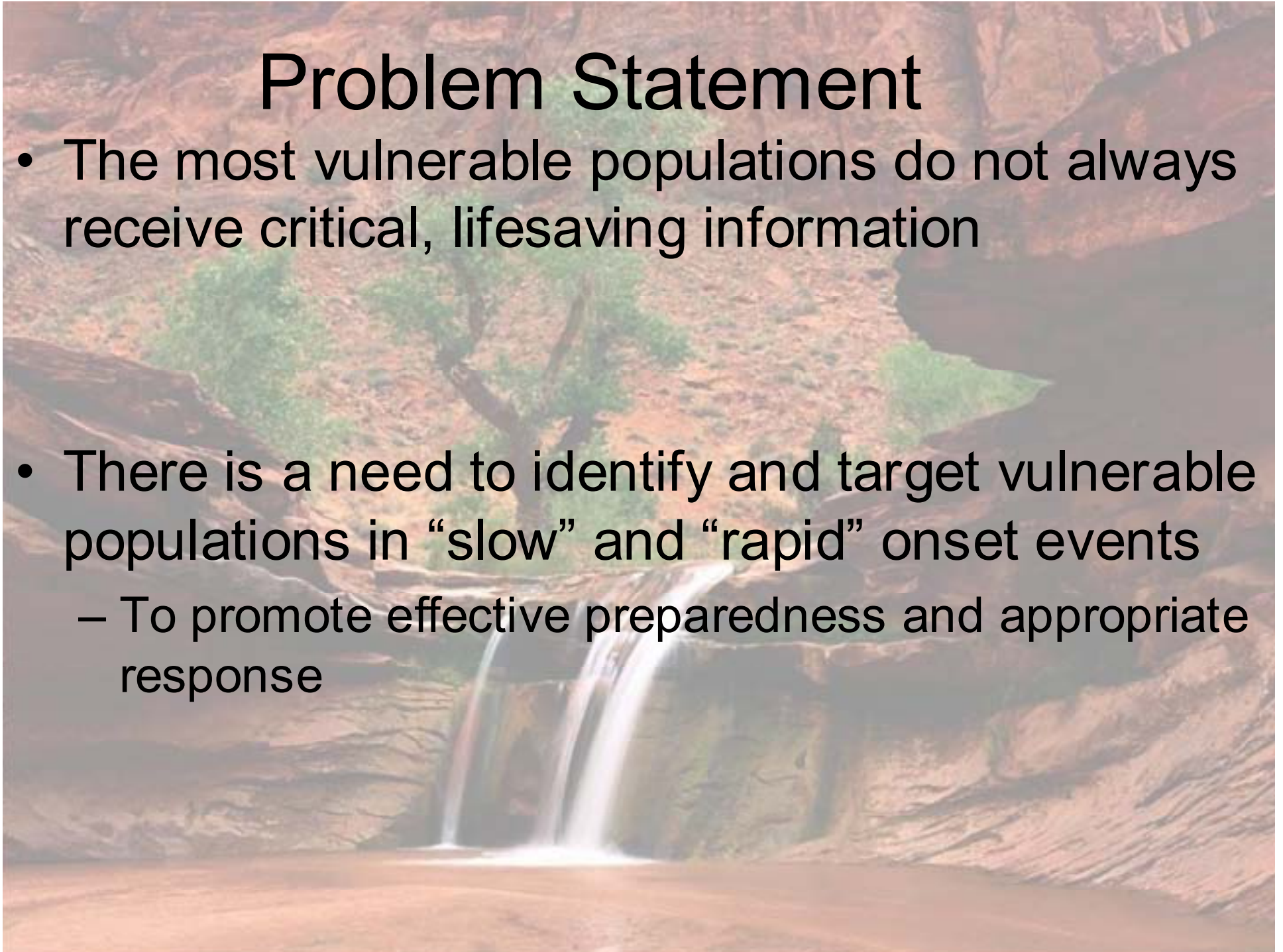


Increasing Societal Resilience to Heat and Winter Storms

Tanja Fransen, Olga Wilhelmi,
Jason Samenow, Chris Uejio

Problem Statement

- The most vulnerable populations do not always receive critical, lifesaving information
- There is a need to identify and target vulnerable populations in “slow” and “rapid” onset events
 - To promote effective preparedness and appropriate response



Research Objectives

- To identify gaps in current methods relating to warnings and vulnerable populations
 - Make recommendations to improve the targeting of warnings
- To identify communities for dissemination of preparedness material
- Develop more focused warning information

Methods

- Background research
 - Literature Review (critique)
 - Personal Communication
- Database Development (demographic, storm)
- GIS spatial analysis & mapping
- Apply analysis of vulnerability assessment to improve
 - warning messaging
 - information dissemination

Major Obstacles

- Time
- Bureaucracy (Government)
- Lack of Data



Management Plan

- Heat (Jason), Winter Storm (Tanja)
- GIS monkeys: Olga & Chris
- Communication Method
 - Conference calls, email, phone



Timeline

Nov. 11th –

Nov-Dec 05:

Literature Review, Communication

Data acquisition

Guidebook Revision

Dec. 5th Conference Calls (1x/month)

Jan-Feb 06:

Map and Vulnerability Analysis

AMS mtng. Update

Target populations

Pre-testing

March 13th

Deliverables:

- Data & Literature review
- Guidebook Comments
- Maps!
- Recommendations for warnings, preparedness materials and dissemination of guidebook
- Public Reaction to targeted warnings
- Journal Article

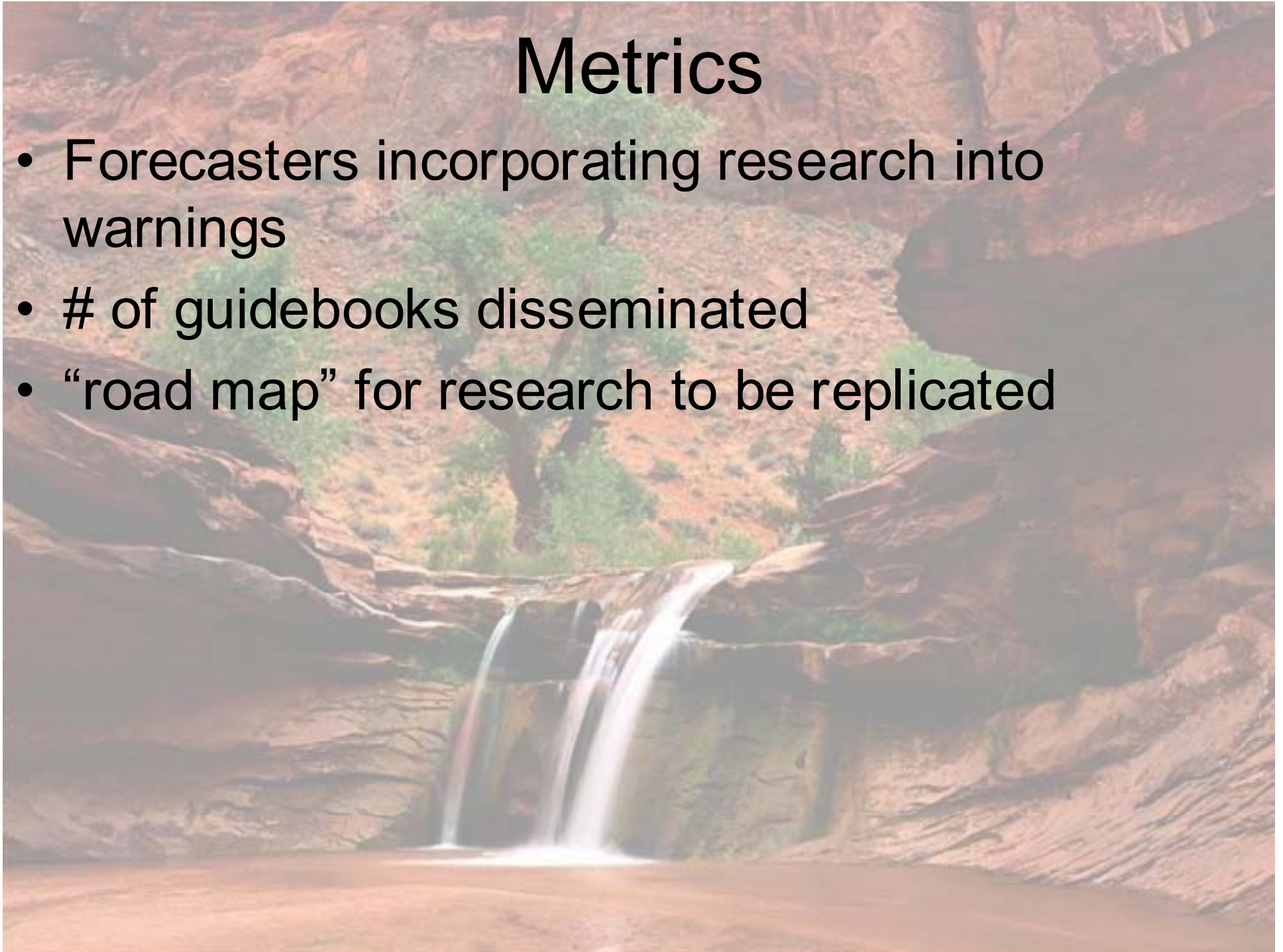
Resource Needs & Budget

- Resource:
 - GIS Database & coverages (shapefiles)
 - Expert solicitation
 - 4 hrs/wk per person
- Budget
 - Possible EPA extramural funding
 - Tucson Travel \$\$\$



Metrics

- Forecasters incorporating research into warnings
- # of guidebooks disseminated
- “road map” for research to be replicated



Fitting in with WAS*IS

- Assessing and improving the value and usability of weather warnings
- Improving decision maker education
- Integrating weather and societal impacts into the forecast and disaster preparedness process

